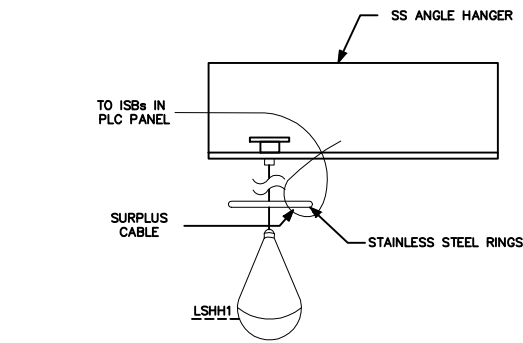
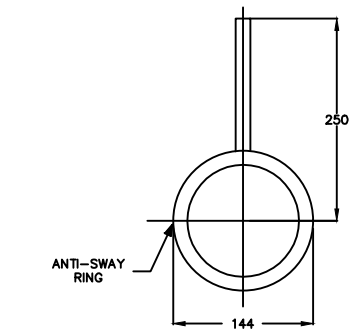


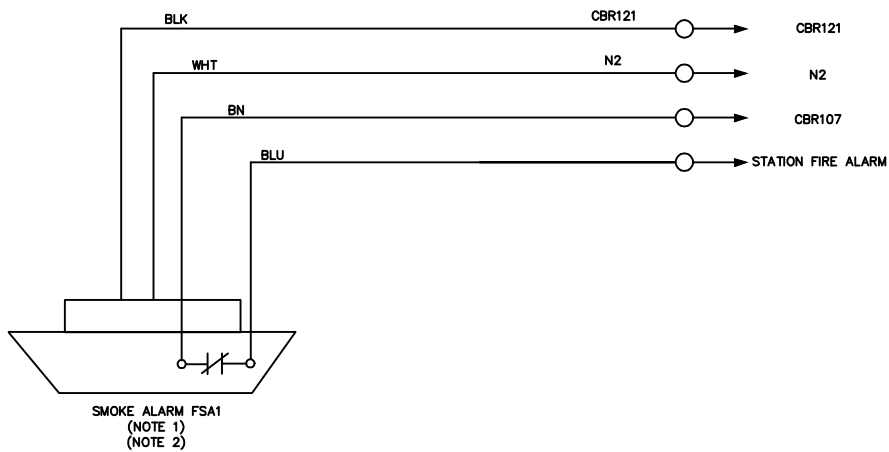
HAZARDOUS GAS MONITORING PANEL WIRING DETAIL



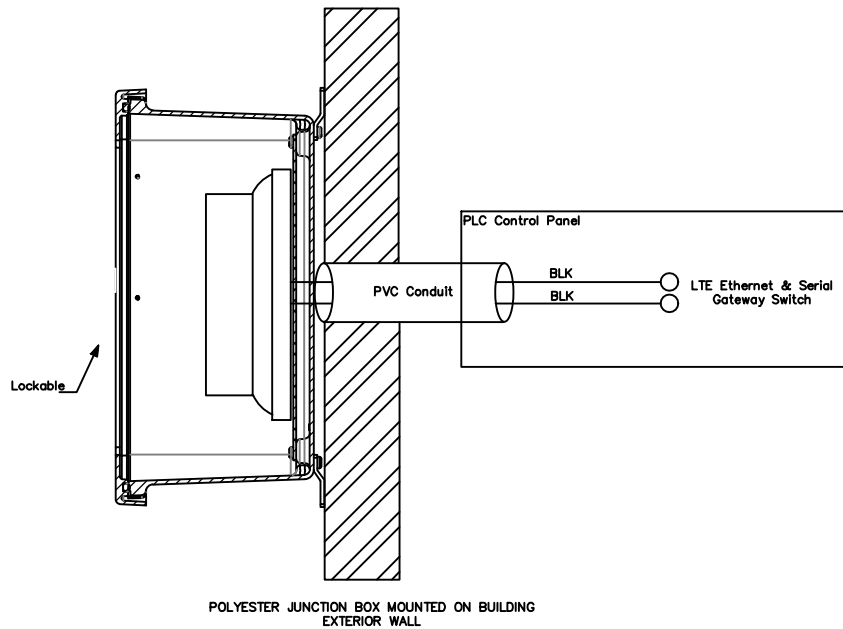
LEVEL SWITCH INSTALLATION DETAIL WET WELL



STAINLESS STEEL SWAY RING DETAIL



SMOKE DETECTOR WIRING DETAIL



INDOOR PANEL CELLULAR ANTENNA MOUNTING DETAIL

NOTES:

1. DETECTORS TO BE INSTALLED IN THE ELECTRICAL ROOM.
2. SMOKE ALARM TO BE ESAS011KA BY GE EDWARDS OR EQUAL.
3. ALL SENSORS TO BE LOCATED IN WET WELL.

- THESE DRAWINGS ARE TEMPLATE DRAWINGS
1. REMOVE THIS NOTE AS PART OF THE DESIGN PROCESS.
 2. MODIFY THIS DRAWING AS DIRECTED IN THE SCADA STANDARDS.
 3. ADD ADDITIONAL DETAILS AS REQUIRED TO MEET THE PROJECT SPECIAL REQUIREMENTS.
 4. WHEN THE CONSULTANT DEVIATES FROM THIS TEMPLATE THEY ARE REQUIRED TO NOTIFY HALTON REGION THROUGH THE USE OF THE STANDARDS DEVIATION MEMO.
 5. FUSED TERMINAL BLOCKS AND CIRCUIT BREAKERS TO BE SIZED APPROPRIATELY.
 6. SHOW ADDITIONAL RIG RACKS (UP TO A MAXIMUM OF 2) ONLY IF NECESSARY BASED ON DESIGN REQUIREMENTS.
 7. THE CONSULTANT IS TO SPECIFY SIGNAL ISOLATORS WHERE REQUIRED. FOLLOW MANUFACTURERS' SPECIFICATIONS FOR GROUNDING OF SHIELDS.

| REVISIONS | | | | MAN/CAD | |
|-----------|--------|-------|-----|------------|--|
| NO | Date | By | | | |
| Design | --- | Ch'kd | --- | Date | |
| Drawn | --- | Ch'kd | --- | | |
| Scale | N.T.S. | | | References | |

Field Notes

Stamp

Regional

ACCEPTED FOR CONSTRUCTION OF REGIONAL INFRASTRUCTURE

REVIEWED FOR COMPLIANCE WITH REGIONAL STANDARDS ONLY.

Director, Water & Wastewater Treatment

Manager, Plant Capital & Engineering



TITLE REGIONAL MUNICIPALITY OF HALTON CONSULTANT PROJECT TITLE

MISCELLANEOUS WIRING & SITE POWER

Consultant File NO

Regional Drawing NO

CONTRACT NO

Drawing NO E901

SHEET XX OF XX